



BAMURRU PLAINS

Wild Bush Luxury

Bamurru Plains Fact Sheet

Camp Address (postal)

P.O. Box 1020
Humpty Doo
NT 0836

Tel: +61 (0) 8 8978 8977
www.bamurruplains.com

Reservations Office

Suite 9, Upper Level
Jones Bay Wharf
26-32 Pirrama Road
Pyrmont
Sydney NSW 2009

Email: info@bamurruplains.com

Tel: +61 (0) 2 9571 6399

Toll free: 1300 790 561

Fax: + 61 (0) 2 9571 6655

Location

Bamurru Plains is located on Swim Creek Station, a 303 sq km coastal buffalo pastoral property near Point Stuart in the Mary River Region. The property encompasses a variety of habitat including vast river frontage, coastal floodplains, savannah woodland, and paperbark swamps. The station is 10 kms from Kakadu National Park's western boundary (100kms from Jabiru in Kakadu) and just over 100 kms east of Darwin.

Access to the property

By Air: There are regular scheduled flights to Darwin from Sydney, Melbourne, Brisbane, Cairns, Alice Springs, Adelaide & Perth. There are international flights from Singapore, Jakarta, Bali & Mumbai.

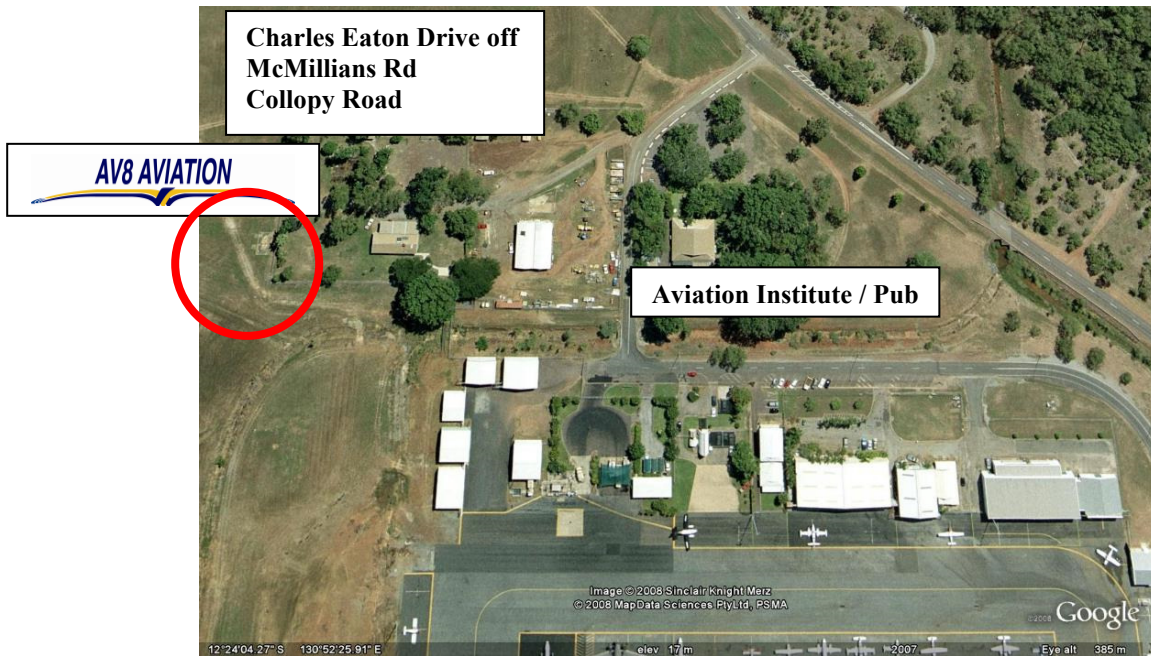
Charter flights to Bamurru Plains leave from the General Aviation area of Darwin Airport. This is approx. 750 yards from the domestic and international terminals.

It is the responsibility of the client to make their own way to the General Aviation area for their flight to Bamurru Plains. We can arrange airport transfers for you at a cost of \$45 from your Darwin hotel or \$15-\$40 from the Darwin airport. Alternatively taxis are readily available from the city or airport. You should ask your taxi driver to take you to:

AV8

3 Colloppy Road, Marrara, Darwin Airport.

Phone: 08 8945 5944



The 20 minute charter flight from Darwin covers some of the most spectacular wetlands in the world and lands at Swim Creek Station Airstrip. One of our staff will be there to greet you and transfer you by road to Bamurru Plains, a journey time of approximately 20 minutes (this road transfer is included in all our bookings). Flying time to Swim Creek Station Airstrip from Jabiru in Kakadu National Park is approximately 25 minutes.

Please note that luggage is restricted to 15kg per person in 'soft bags'. Excess luggage can be stored at the AV8 terminal if required.

IMPORTANT: Please ensure you are at AV8 Aviation office 30 minutes prior to your departure flight time for check-in procedures.

Airborne Solutions

It is the responsibility of the client to make their own way to the meeting point for their helicopter transfer. We can arrange private transfers for you at a cost of \$50 from your Darwin hotel to the helicopter. Alternatively taxis are readily available from the city and you should ask your taxi driver to take you to:

Darwin Airport Resort

1 Henry Wrigley Drive

Marrara.

Airborne Solutions Ph: 08 8972 2345.

IMPORTANT: Your pilot from Airborne Solutions will meet you at the hotel lobby.

Transfers are provided complimentary from the Darwin airport. The pilot will be waiting at the bottom of the escalators as you enter the baggage claim area. Pilots will be wearing an Airborne Solutions uniform.

Please note that luggage is restricted to 10kg per person in 'soft bags'.

By Road: Bamurru Plains is a 3 hour drive from Darwin (the first hour and three quarters is on sealed tarmac road, the last hour and a quarter are on unsealed public and station roads). The drive from Jabiru in Kakadu National Park will take 2½ hours, again part unsealed roads. Please note that if you are self-driving to the property you are required to leave your vehicle at the entrance to the property, where you will be met by our staff and transferred into camp. There is no public vehicle access to Bamurru Plains.

When to go/Climate

The Top End is dominated by a tropical monsoonal weather pattern that results in a number of distinct seasons.

April to July – the early part of the 'Dry'

Nights can be cool and early morning fogs common. The days are warm, dry and generally cloudless with some spectacular sunsets. From April the water begins to slowly recede from the floodplains.

August to September – late part of the 'Dry'

Days and nights start to warm up. The retreating waters concentrate in billabongs together with the birdlife which congregates in extraordinary numbers. Many tropical woodland plants flower at this time of year.

October to December – build up to the 'Wet'

This is a time of increasing humidity and heat, with the build up of massive cumulus clouds and exciting thunder and lightning shows. Early rains start to turn the country green.

January to March – the main part of the 'Wet'

The arrival of the full monsoon brings heavy rains and high tides. The rivers break their banks and spread out across the floodplains, water lilies flower and life returns to the country in all its majesty. The 'run off' is the best time of year for Barramundi fishing.

Opening and closing

Bamurru Plains is closed from 1st November to 31st January during the early months of the wet season when weather conditions are particularly humid.

Accommodation - 'Wild Bush Luxury'

A style of accommodation more akin to some of the safari camps in Africa, Bamurru Plains' attraction lies in the birdlife and wildlife of the surrounding floodplains and savannah woodland. As with the African camps we believe that a stylish wilderness experience does not need to be 5 star in the traditional sense; however there are key elements that are crucial to an exclusive stay in the bush: a supremely comfortable bed and quality linen (100% cotton, a choice of 3 pillows), great bathrooms, good food & wine and excellent guiding. Bamurru does not purport to be a 5 star room in the bush but the style of experience is utterly exclusive, rustically chic and totally in tune with the surrounding country.

Rooms

The camp has nine safari bungalows built amongst the pandanus vegetation on the edge of the wetlands. Each of them has been built with privacy uppermost in mind and to take advantage of the spectacular views across the wetlands. Each bedroom has views towards the floodplains. Rooms are available in twin and king double configurations and extra bedding is available in the form of a deluxe swag.

En suite bathrooms wrap around one side and/or the rear of each safari bungalow with high pressure showers and hot water. All rooms have ceiling fans for the dry months of winter (April to October) and air conditioning can be provided in 3 rooms during the wet season months. As most of the power is solar generated, air-conditioning requires additional generator capacity and a surcharge applies.

Please note that Bamurru Plains is a 'camp' and as such exposes guests to the sights and sounds of the bush around them. In keeping with this, the safari bungalows do not have televisions, CD players, mini-bars, telephones, internet access. Hair dryers are available on request.

Check In/Out

- Check in to your bungalow is available from 2pm
- Check out from your bungalow is required by 11am

Lodge Building

The focal point for dining and gathering with other guests, the lodge building has a quieter library area with reference books and some privacy from the more communal areas in the rest of the building, which includes the dining area. The front deck features a BBQ firepit area, a wet edge swimming pool with views across the floodplains and a covered lounge area for sitting out the heat in the middle of the day.

Dining

As we have an early start in the mornings to observe the wildlife we offer a light breakfast to start the day. There is a selection of cereals, fruit, juices and freshly baked bread. The first major meal is lunch served at approx. 12:30pm. Snacks and drinks are provided when out on activities. A three course dinner (first course is often canapés on the front deck) is served at approximately 7:30 every evening and dinner is hosted by the camp manager or one of the guides. Meals are shared with other guests around the dining room table. Food is based on contemporary Australian cuisine with a hint of native produce. A select open bar (wines, beers, selected spirits and soft drinks) is included in the tariff and this is generally accessed on a self-service basis.

Children

The camp is not suitable for children under 8 years of age. This is partly acknowledging the small size of the camp; additionally there are several safety considerations. If the camp is booked exclusively and suitable supervision is arranged then children of any age will be permitted.

Please note there are no child minding facilities available at Bamurru Plains. All guests dine together.

Laundry

Please note there is no laundry service or facilities available at Bamurru Plains.

Smoking Policy

Smoking is not permitted in the Main Lodge or bungalows. Ashtrays are provided for the deck area and guests may take these back to the bungalow to use on their outside verandahs only. Please note three of the Bungalows have two verandahs, one enclosed with screen and the entrance verandah, smoking is only allowed on the entrance verandah. No smoking on any tour activities is permitted.

Communication

Please note that there is no mobile coverage or Wi-Fi access available at Bamurru Plains. In case of an emergency family or friends will be able to contact you on the Bamurru Plains camp telephone number +61 (0) 8 8978 8977. Please note that this phone is not attended 24 hours.

Dress Code

The dress code is smart casual.

What to bring

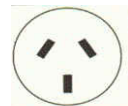
- Light clothing is more suitable in the tropical climate. Long sleeves will offer better protection against the sun and mosquitoes, which appear at sunset.
- A wide brimmed hat
- Sunglasses
- Binoculars
- Insect repellent
- Light walking boots or trainers for bush walks

Hotel Facilities

- Swimming pool
- Well-stocked library
- Gallery shop
- Equipment (flip charts and overhead projector) for meetings. Seating and table space is available for meetings of up to 24 people.

Power

The majority of power in the camp is solar generated and usage of it is carefully managed. Australia operates on 240V and uses a 2 or 3-pin plug.

**Activities**

Activities focus on early morning and late afternoon when the wildlife and the light are at their best. During a 2 night stay at Bamurru Plains a guest would expect to participate in a number of included activities such as: a river cruise spotting birds and crocodiles on the Sampan River (operating April to October; tidal conditions permitting), four wheel drives in open top safari vehicles, an airboat trip on the floodplains and a bush walk in the savannah woodlands that fringe the floodplains (seasonal). Activities available at extra cost include: fishing (barramundi), scenic helicopter flights, watching the seasonal buffalo muster on the floodplains or taking a privately guided day trip to Kakadu National Park or Arnhem Land.

Scenic Helicopter Flights

Enjoy the thrill of a helicopter flight and an exclusive aerial experience over the spectacular floodplains and coastline of Northern Australia.

A bird's eye view of the thousands of Magpie Geese, Egrets, Whistling Ducks and flocks of Corellas provides a different and inspirational perspective of the floodplains, river systems and prolific wildlife of Australia's north coast. The rivers of this part of Australia play host to the largest population of salt water crocodiles in the world and the property is also home to almost 5,000 head of buffalo.

There are a number of scenic flight options available. Please enquire for costs with one of our reservations staff or Bamurru guides for details.

Fishing

The best time is during the 'run off' in February/March. Bamurru is an excellent location for the dedicated fisherman seeking some comfort. Fishing is predominantly tidal salt-water fishing and requires a specialist fishing guide to be arranged (there is an additional cost). The main species to be fished here is Barramundi.

Kakadu National Park & Arnhem Land

Private day tours can be arranged from Bamurru Plains to either Kakadu National Park or Arnhem Land at an additional cost. A short flight makes the escarpment country of Kakadu an easy day trip from the camp and opens up a range of Aboriginal cultural sites. Jabiru is a 20 minute flight away and a private guide will be arranged for the day.

Average length of stay

The inclusive activities on the property are designed around a two night stay, which is also the minimum stay. A 3 night stay will allow time for a day trip to Arnhem Land or Kakadu and 4 nights will allow time to sit back and relax in and around the camp.

Luxury Lodges of Australia

Bamurru Plains, along with other Wild Bush Luxury properties are proud to be founding members of Luxury Lodges of Australia – a collection of independent luxury lodges and camps offering unforgettable experiences in Australia's most inspiring and extraordinary locations.

Deposits and Payments

Full payment must be made 30 days prior to guests' arrival. For bookings made within 30 days, payment must be made within 48 hours of booking.

Cancellation Policy

As a small property, our business depends on maximising occupancy and cancellations often result in empty rooms due to booking lead times. For cancellations the following penalties apply;

- More than 45 days prior to arrival; \$50 handling fee + any charges incurred by us from credit card fees
- Within 45 days of arrival the deposit will be forfeited
- Within 30 days of arrival all monies will be forfeited

- Cancellations must be advised in writing and will take effect from the date they are received by our Sydney Reservations office (info@bamurruplains.com)